



Dolphin Wireless Stopwatch Timing System Set Up

Configure Software/Base

Connect base unit to laptop with USB cable. Open Hy-Tek Meet Manager, and open Dolphin from the Interface menu on the Run screen. In the Dolphin interface, set the channel on the base by clicking the Channel box and selecting the desired channel.

Configure starter:

TRIG = CTS for use with CTS electronic start system
 TRIG = NC for use with a normally-closed electronic start system
 Select CHAN to set channel number. The starter must be on the same channel as the base.
(See How to Change Settings for details)

ON/OFF: Press and hold the Reset button to turn watches and starter on or off.
*Power-saving feature:
 After 10 minutes of non-use, the watches will turn themselves off. The starter will turn itself off after 5 minutes of non-use.*

Configure lane watches:

Set LANE (1-10) and TIMER (A, B or C) for each watch.
 Select CHAN to set channel number. All watches must be on the same channel as the starter and the base.
(See How to Change Settings for details)

HOW TO CHANGE SETTINGS: Press and hold Reset and immediately press the Start/Stop button. Hold them both until unit enters the menu. Release the Reset button and then the Start/Stop button.

Press the Start/Stop button to change the setting for the current menu option.

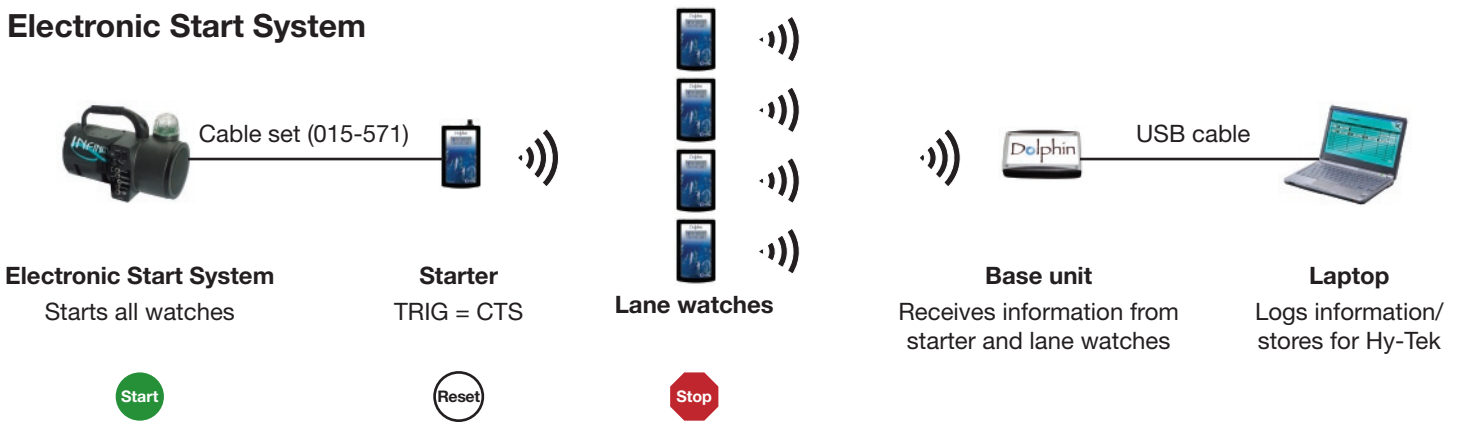
Press Reset to advance to the next menu option.

Accessories and Replacement Parts	
R-1004-0505	Base
R-1004-0506	Watch
R-1004-0507	Starter
R-015-569	USB cable
R-015-571	Starter to CTS Infinity start system cable set
R-015-572	Starter to CTS Champ Start cable set
R-045-011	Large hard-sided carrying case
R-045-010	Small hard-sided carrying case

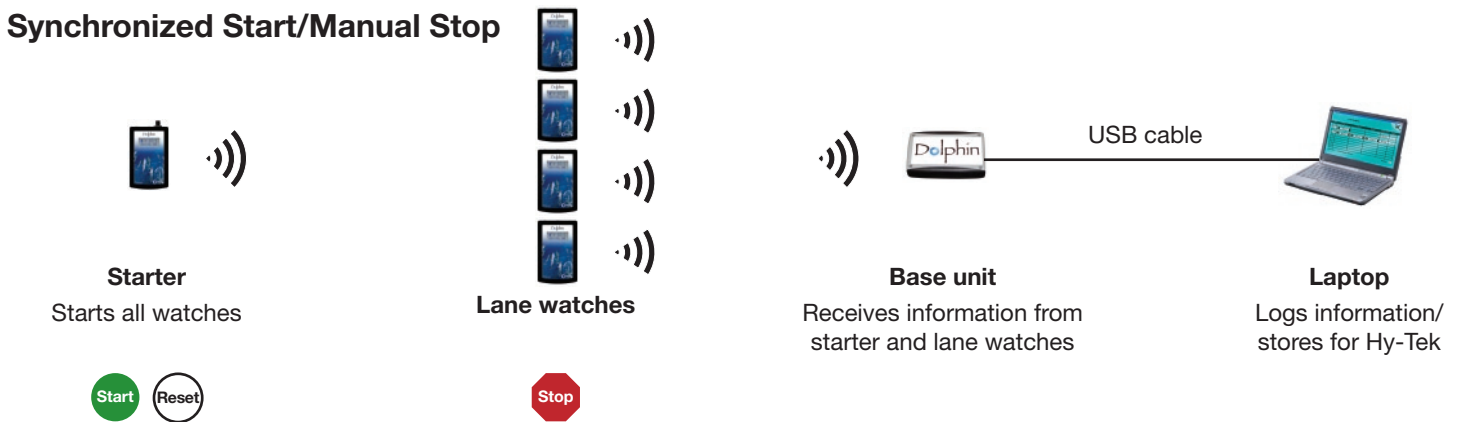
Battery: 9-volt; provides 40+ hours of operation.

Colorado Time Systems
 1551 E. 11th Street, Loveland, CO 80537
 Phone: 970-667-1000 x256 Fax: 970-667-1032 Toll free: 800-267-0653 ext. 256
 www.coloradotime.com E-mail: customerservice@coloradotime.com

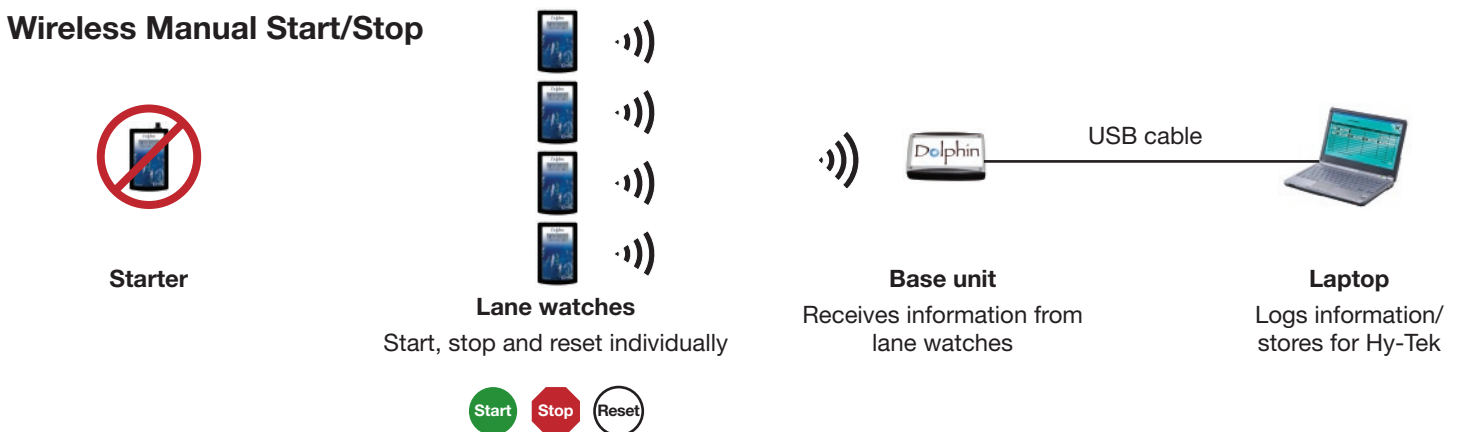
Electronic Start System



Synchronized Start/Manual Stop



Wireless Manual Start/Stop



FCC Compliance Statement:

This device complies with Part 15 of the FCC Rules. Operation is subject to the following two conditions: (1) this device may not cause harmful interference, and (2) this device must accept any interference received, including interference that may cause undesired operation.