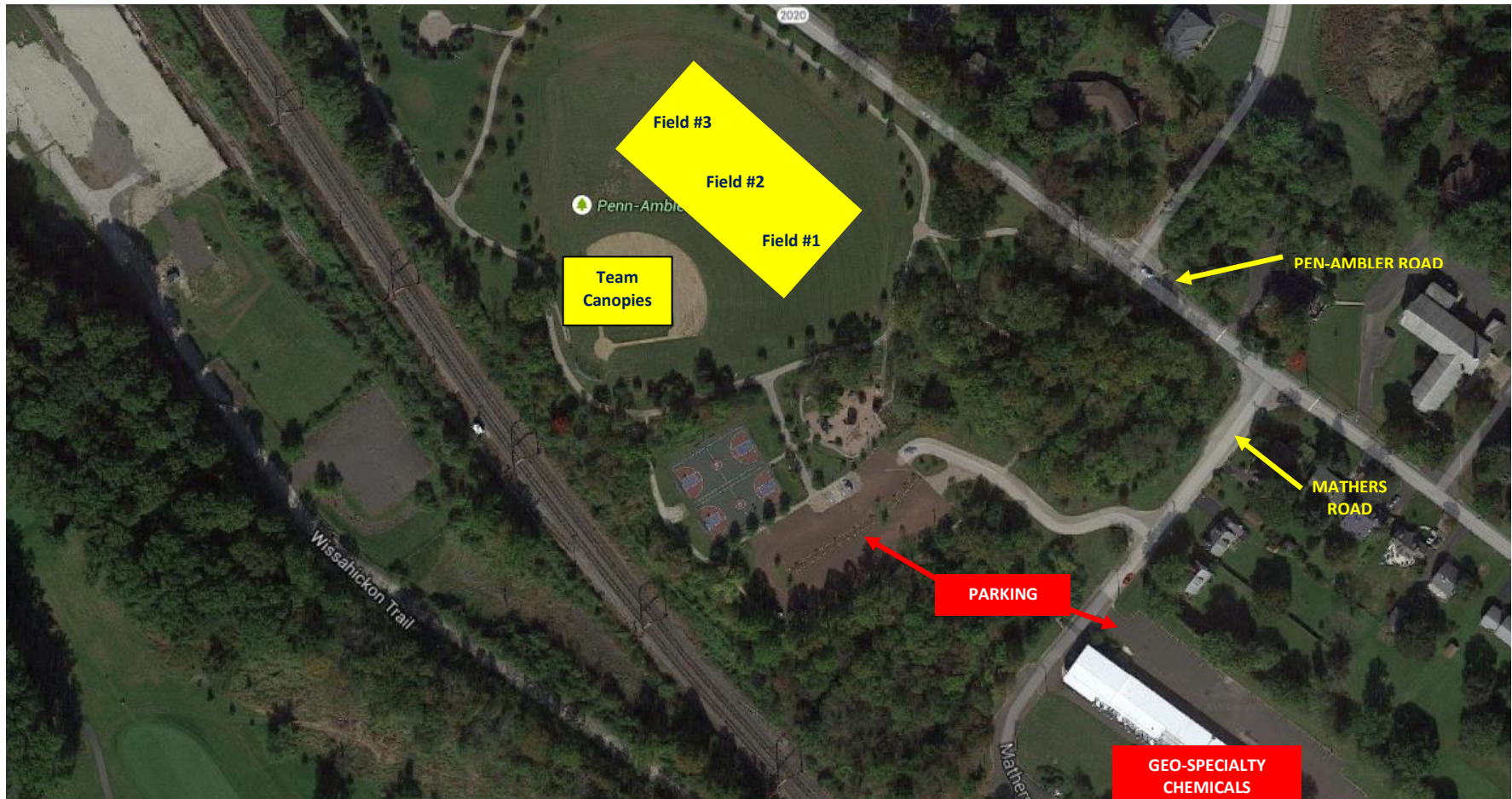


**WISLAX LACROSSE INVITATIONAL
SATURDAY, MAY 9TH 2015**

**PEN-AMBLER PARK
700 PEN-AMBLER ROAD, AMBLER PA 19002
FIELD LOCATION & OVERVIEW**



- **TEAM AREA:** This map depicts an overview of the field at Pen-Amble Park where the games are to be played and teams can setup canopies.
- **CHECK-IN:** The registration table will have all the information that coaches and parents need for the event.
- **PARKING:** Available at the playground entrance as well as at the next door business, GEO Specialty Chemicals.
- **CLINICS:** Fusion Lacrosse & team games will offered during the event. Times for the team clinics will be available at the registration table and on the day's schedule.
- **QUESTIONS / CONTACT INFORMATION:** Any questions please contact Chuck Wurzbach, WissLax Director, @ 484-919-0053.