

Newtown Babe Ruth Softball

Operations Report, December 2014

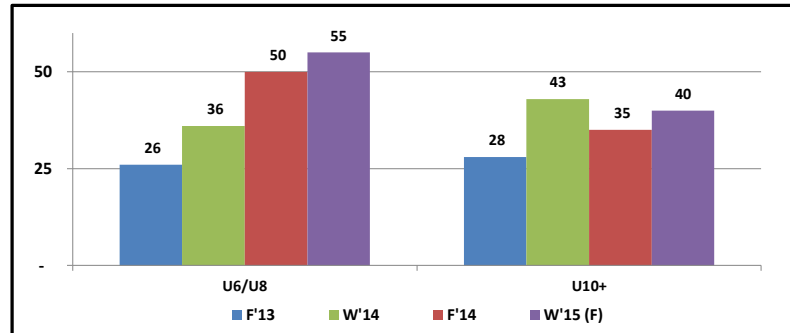
Thru 12/10/14

SUMMARY

- * Coach/Volunteer Background Checks Outstanding. Process identified--Target date of 12/1/14
- * 2014 End of Season Coaches/Directors Roundtable (See attached notes)
- * Fall Clinics concluded
- * Winter Clinics scheduled (Discussion)
- * Spring '15 Season (See Below)

FALL & WINTER CLINIC REGISTRATION

	F'13	W'14	F'14	W'15 *	YoY
U6/U8	26	36	50	55	92%
Pitching	N/A	N/A	10	12	
Catching	N/A	N/A	N/A	N/A	
	26	36	60	67	131%
U10+	28	43	35	40	25%
Pitching	7	12	13	12	
Catching	3	5	4	5	
<i>*Forecast</i>	38	60	52	57	37%
Participation Rate*					
U6/U8	62%	40%	77%		
U10+	25%	37%	38%		



*Clinic registration as % of immediately adjacent season registration, adjusted for Travel double-registration (U10+)

SPRING '15 SEASON

REGISTRATION PROJECTIONS												
	SPRING	YoY	#/Team	Teams	Games	FALL	YoY	#/Team	Teams	Games*	TRAVEL	
U6	40	10%	10	4	16	31	10%	10	3	12	U10	12
U8	58	10%	10	6	24	41	10%	10	4	16	U12 A	13
U10	53	5%	12	4	20	41	5%	13	3	15	U12 B	TBD
U12	14	-50%	13	1	5	14	0%	14	1	5	U13	13
U14	13	0%	13	1	5	14	0%	14	1	5	U14	11
TOTAL	177	-1.1%		16	70	141	6.8%		12	53	TOTAL	49

SCHEDULE

Event	Date	Location
Winter Clinic	1/10/15	NYA
Thru	2/28/15	
Rec. Evals	3/7/15	NYA
Travel Practices	3/14/15	
Thru	4/4/15	
Spring '15		
Opening Day	4/11/15	
Coaches Orientation	4/18/15	TBD
Skills Instruction	TBD	Varies

PROJECTED FIELD USE

Field	Division	Rec Teams	Players	Travel Teams	Players
Fairfield Hills	U6	4	40	N/A	0
Head O'Meadow	U8	6	58	N/A	0
Liberty	U10	4	53	1	12
Reed	U12	1	14	Float	
Dickinson*	U14	1	13	1	11
NMS*	U12/U13	Float		2	26
Batting Cage	ALL	Float		Float	
Treadwell*	ALL	Float		Float	
TOTAL		226	16	177	4

*Some times/days will be blocked due to use by other community groups