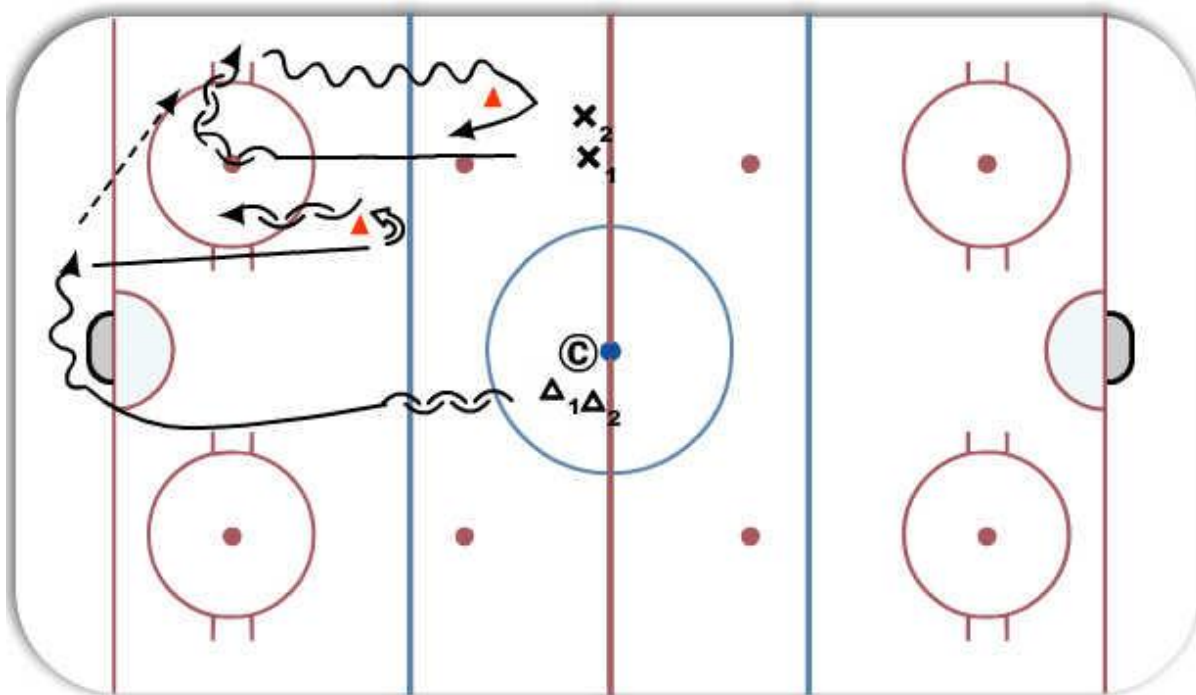


Break out to 1 on 1



Description

D 1 skates bwd till coach dumps puck.

X1 skates in, mohawks to boards for pass from D1. D1 and X1 skate out to cones, where X1 turns for a 1 on 1 against D1.

X1 and D1 switch lines.

Key Points: Wingers go to boards for pass., D swings net tight, follows puck carrier for back puck support., Wing drives net., Defense denies the middle.