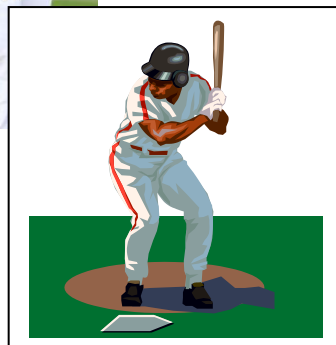


# RYSBA

## Coaches Corner

Spring Edition

## The 2014 Season



To All our  
Volunteers!  
Thank **you**  
for  
making  
a  
difference!

### ***INSIDE THIS ISSUE***

<b>2014 Season Dates</b>	1
<b>Injury Reporting</b>	2
<b>CORI CHECK</b>	3
<b>Board of Directors</b>	3
<b>Field of Dreams</b>	3
<b>Equipment Info</b>	3
<b>Safety Rules</b>	4
<b>Umpire Info</b>	6

## *Spring Is Here!*

SCHEDULE AND IMPORTANT DATES Continued page 6.

### **Play Ball! Opening Day**

Saturday, April 26

Sunday, April 27 Rain date.

# RYSBA Injury Reporting Guidelines and Information

## What to report:

Any incident that causes any player, manager, coach, umpire, or volunteer to receive medical treatment and/or first aid.

## When to report:

Report all events within 48 hours of the incident. To either:

Joan Cooper-Zack  
617-984-9006  
Dave Hansbury  
617-347-8335

## How to make the report:

Reporting incidents by phone and follow with an email to

[Joanzack@msn.com](mailto:Joanzack@msn.com)  
[dhansbury68@comcast.net](mailto:dhansbury68@comcast.net)

## Please include:

- Name and phone number of the individual involved
- Date, time and location of the incident
- *As detailed description of the incident as possible*
- A preliminary estimation of the extent of injuries
- The name and phone number of the person reporting the incident

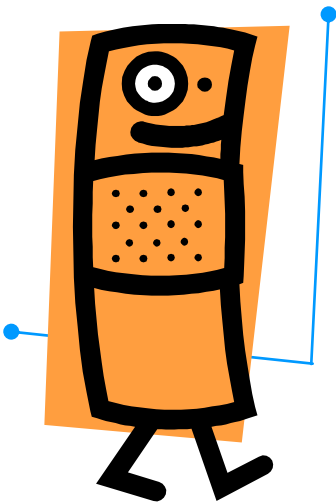
## Safety Officer's Responsibilities

Within 48 hours of receiving the incident report, the Safety Officer will contact the injured party or the parents

- Verify the information received.
- Obtain any other information necessary.
- Check on the status of the injured party.
- In the event that the injured party required other medical treatment (emergency room, doctor's visit) will advise the parent or guardian of the RYSBA's insurance coverage and the provisions for submitting any claims.

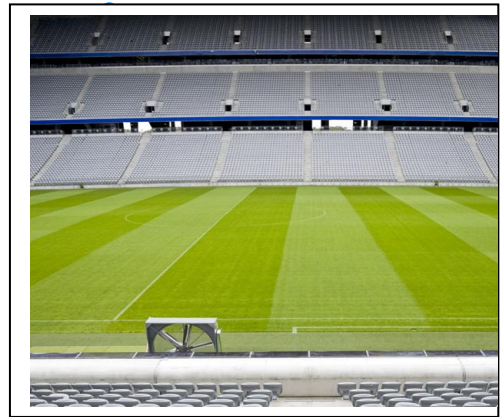
If the extent of the injuries is more than minor in nature, the Safety Officer shall periodically call the injured party to

- Check on the status of any injuries
- To check if any other assistance is necessary in areas such as submission of insurance forms, etc. until such time as the incident is considered "closed" (i.e. no further claims are expected and/or the individual is participating in the league again.)



## ***THE FIELD OF DREAMS:***

Do you have special talents – always wanted to be part of the grounds crew?



## ***Equipment Information***

All equipment inquiries should be directed to the Equipment Manager, Dave Hansbury at Please notify the Equipment Manager for all league issued equipment requiring repair or replacement, including catcher's equipment.

## **HAVE YOU COMPLETED YOUR Yearly CORI FORM?**



**Contact: Donald Craft**

## **2014 BOARD OF DIRECTORS**

- ✚ President – Dave Hansbury
- ✚ VP of Membership – Donald Craft
- ✚ Ways and Means –Tiffany Johnson
- ✚ Treasurer – Jim Hurley
- ✚ Secretary – Jim Leighton
- ✚ Player Agent – Justine McCauley
- ✚ Director of Competitive Baseball – Steve Sateriale
- ✚ Director of Softball –Jay Ginsburg nominated
- ✚ Director of Instructional Programs – Ed Menghi
- ✚ Facility Director – Jim McCauley
- ✚ Concession Director – Kerry Ginsburg
- ✚ Webmaster – Mark Johnson
- ✚ Director – At – Large: Chuck Rood, Tim Carroll, Mike Bartorelli, Jim Leighton, Ken Carter, Karen Albergo
- ✚ Safety Officer – Joan Cooper-Zack
- ✚ Equipment Director :
- ✚ Chief Umpire: Bob Choumitski



## RYSBA General Safety Guidelines

### **All Players should be in full uniforms at all games.**

Softball players may only wear league issued shorts, and sliding shorts and/or sliders *must* be worn. Softball players in 10U and up must have face masks on the batting helmets. Baseball players may not wear shorts. Male players are encouraged to wear athletic supporters. Mouth guards are encouraged, but not mandatory at this time. Catchers must wear all equipment, including throat guard. Male catchers must wear cup and athletic supporter; female catchers are encouraged to wear female athletic supporters.

### **New Guideline - Girls Softball: Face Masks**

All pitchers in softball 10U-16U are to wear a face mask while on defense during all softball seasons. Managers will be responsible for enforcement of the face mask rule.

### **Manager/Coaches are responsible for the behavior of all players throughout the game.**

All players should remain in the dugout during a game. Of course there are exceptions for injuries, the bathroom, pitcher warm-ups, etc. **Parents should not be watching the game from inside the dugout.**

**Only ONE batter should be in the on-deck cage at a time**, and he/she *must* be wearing a helmet while swinging a bat. On fields without an on-deck cage, hitters are *NOT* allowed to take practice swings. **No swinging bats or throwing balls inside the dugout.**

### **Equipment must be maintained orderly at all times.**

The coach's equipment bag should be kept in the on-deck cage where available. If no on-deck cage is available the equipment bag must be kept against the fence. Player equipment bags should be hung up whenever possible. Water bottles and gloves should be kept on the bench and not scattered about the dugout. Bats should be kept in the on-deck cage or hung up and not on or near the dugout bench.

**Periodically check all equipment for defects.**

**Coaches and umpires should walk the fields prior to each game and practice for hazards, ie rocks, glass, etc.**

**NO ROLLERBLADING, SKATEBOARDING, BIKE RIDING, or CLIMBING ONTO DUGOUTS OR STORAGE COMPARTMENTS on RYSBA complexes.** All adult volunteers, managers, and coaches are responsible for enforcing this rule. **Children under 12 must be accompanied by an adult.**

**NO SMOKING, ALCOHOL OR DRUGS is allowed on RYSBA complexes.**

Smoking is allowed in the parking lots only.

NO Dogs allowed on the fields.

# RYSBA Safety Guidelines Continued



- **Equipment must be maintained and orderly at all times.** The coach's equipment bag should be kept in the on-deck cage where available. If no on-deck cage is available the equipment bag must be kept against the fence. Player equipment bags should be hung up whenever possible. Water bottles and gloves should be kept on the bench and not scattered about the dugout. Bats should be kept in the on-deck cage or hung up and not on or near the dugout bench.
- **Coaches should periodically check all equipment for defects.** Please notify the Equipment Manager for all league issued equipment requiring repair or replacement, including catcher's equipment. All equipment inquiries should be directed to Dave Hansbury until further notice.
- **ALL ADULTS IN THE DUGOUT OR ON THE PLAYING FIELD MUST BE CORI'D.** This includes Managers, Coaches, Umpires, and Team Parents. It also applies to Learning the Game. Parents should not be watching the game from inside the dugout.

## 2014 Season Concussion Education

To help ensure the health and safety of young athletes, RYSBA Board members, coaches will complete the *CDC Heads Up: Concussion in Youth Sports* on line education program. Certificates will be submitted to the safety officer by April 30<sup>th</sup>.

<http://www.cdc.gov/concussion/HeadsUp/Training/index.html>

If you are unable to complete this program please contact:  
Joan Cooper-Zack 617-984-9006 for assistance:

Each parent and athlete will review and sign the Parent/Athlete Concussion Information Sheet prior to the start of each season. A copy will be kept by the parent and a copy will be returned to the coach for collection by the safety coordinator at the start of each season. The *Heads Up* education provides important information on preventing, recognizing, and responding to a concussion. These forms will be available to coaches at the start of each season.



First Aid Kits: Each team will receive a kit with basic supplies that can be refilled from supplies at the concession stand.

A first aid box is also available for each field!

An AED is located in the hallway of the bathrooms by the concession stand.



From the Concession Stand

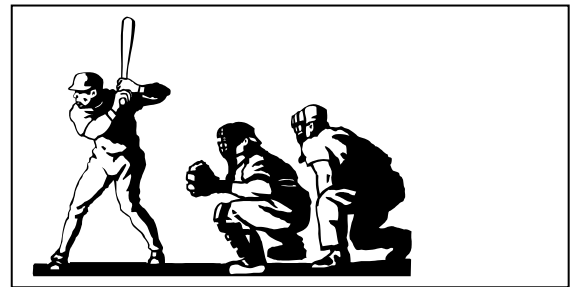
### **It takes a village!**

Volunteers to work the concession stand needed. It's fun and provides an opportunity to help the league and meet new people!!

Coaches: Home Team parents are asked to work the concession stand. Sign up for two innings!

---

## **UMPIRE INFORMATION**



All umpires are required to be CORI checked and complete a concussion training program. The certificate is to be submitted to the Chief Umpire and/or Safety Officer and is available online from the National Federation of High Schools at:

<https://www.nfhslearn.com>

The specific course is "Concussion in Sports 2.0" – and available at no charge. You will be asked to register so that you can obtain a certificate. Please contact the Chief Umpire if you have any problems.

Or complete the <http://www.cdc.gov/concussion/HeadsUp/Training/index.html>

All umpires will wear all appropriate safety gear while umpiring.

Chief Umpire: Bob Choumitsky

[rhoumitsky@gmail.com](mailto:rhoumitsky@gmail.com)