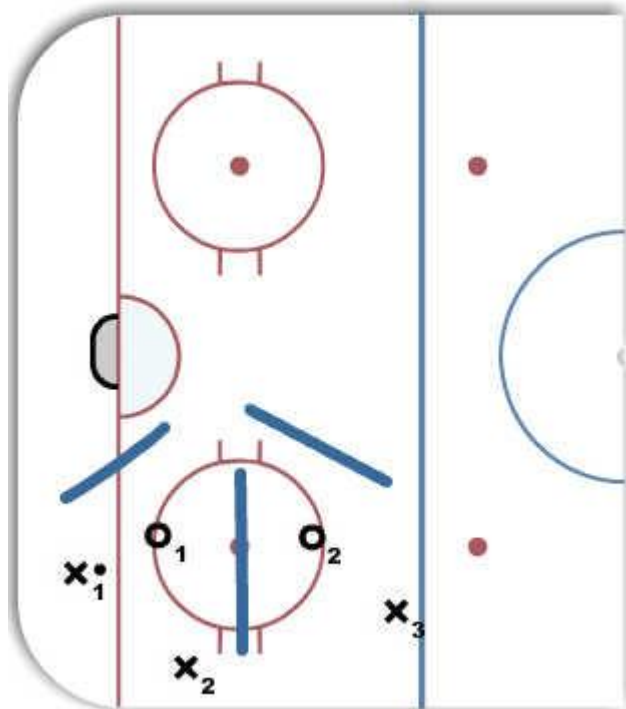


## 3on2 - attack the seams



### Description

The blue lines represent the seams in the defensive coverage. X1, X2, and X3 cycle the puck on the perimeter trying to get O1 and O2 to commit and open up one of the seams. The X players can make runs into the seams but cannot hang out in the slot. The X players can switch positions on the fly. The O players can switch on the fly as well. Offense gets 1 point for scoring. Defense gets a point with goalie save, turnover, or defending for 30 seconds. Play game to 3 then switch players and positions.

### Key Points: