
OFFICIAL LACROSSE SIGNALS



1. Timeout. For Discretionary or Injury Timeout, Follow Signal Above with Tapping of Hands on Chest



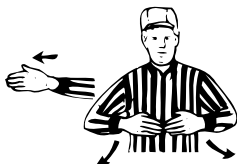
2. Score



3. No Score



4. Faceoff



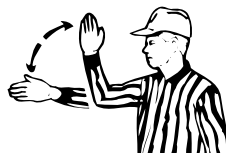
5. Alternate Possession



6. Ball in Possession on Faceoff and Start the Clock at Halftime



7. Ball has Entered Attack Area



8. Out of Bounds Direction of Play



9. Failure to Advance the Ball



10. Loose Ball



11. Simultaneous Fouls

PROCEDURAL SIGNALS

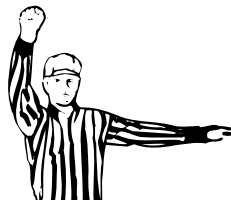
OFFICIAL LACROSSE SIGNALS



12. Non-Releasable Penalty



13. Counts



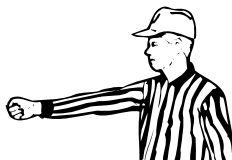
14. Stalling Warning



15. Re-entry of the Crease



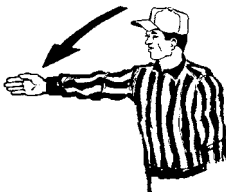
16. Play-On, Dead Ball or Dead Ball Followed by Appropriate Foul Signal



17. Inadvertent Whistle (Face Press Box)



18. Disregard Flag



19. Free clear



20. Tipped/Deflection

PROCEDURAL SIGNALS

OFFICIAL LACROSSE SIGNALS



21. Personal Foul



22. Illegal Body Check



23. Slashing



24. Cross Checking



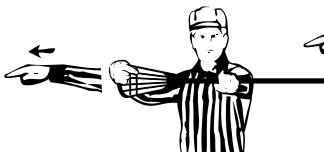
25. Tripping



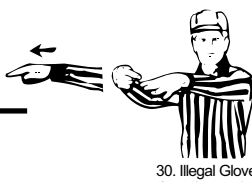
26. Unnecessary Roughness



27. Unsportsmanlike Conduct

28. Illegal Equipment
(Crosse)

29. Deep Pockets

30. Illegal Gloves
(or point to other
illegal equipment)

31. Expulsion Foul

PERSONAL FOULS

OFFICIAL LACROSSE SIGNALS



32. Technical Foul
(Time Served)



33. Interference



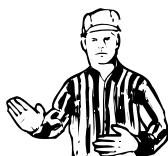
34. Illegal Offensive
Screening



35. Holding



36. Warding Off



37. Pushing



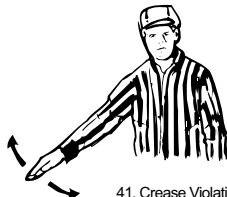
38. Withholding
Ball from Play



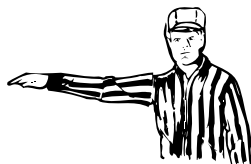
39. Stalling or
Delay of Game



40. Offside



41. Crease Violation



42. Conduct Foul



43. Illegal Procedure



44. Substitution
Infraction



45. Illegal Touching
of the Ball

TECHNICAL FOULS