



Planning

Civil
Engineering
Consultancy

Site
Investigation

Specialist
Testing

Sports
Surface
Advice

Project
Management

www.sportslabs.co.uk

FIELD PERFORMANCE REPORT

**In accordance with
the declared contract specification**

Field Reference: Lyman Hall High School

Field Address: Lyman Hall High School
70 Pond Hill Road
Wallingford, CT
06493

Report Number: 90595/0700s

Report Status: DRAFT

Issue Date: 9th December 2015

Client: Shaw Sports Turf
185 South Industrial Boulevard
Calhoun, GA
30701

FOREWORD

1. This report has been prepared by Sports Labs limited with all reasonable skill, care and diligence within the terms of the contract with the Client and within the limitations of the resources devoted to it.
2. This report is confidential to the Client and Sports Labs Limited accepts no responsibility whatsoever to third parties to whom this report, or any part thereof, is made known. Any such party relies upon the report at their own risk.
3. This report shall not be used for engineering or contractual purposes unless signed by the Author and the Checker and unless the report status is "Final."
4. *Not all tests carried out are within our scope of ISO 17025 Accreditation.
5. Comments and opinions are outwith the scope of our ISO 17025 accreditation.



HEAD OFFICE

12b Nasmyth Court
Houston Industrial Estate
Livingston EH54 5EG
Scotland

Tel: +44 (0)845 602 6354
Fax: +44 (0)845 602 636
Email: info@sportslabs.co.uk

REGIONAL LOCATIONS

Johannesburg
Ghent
Ankara
Boston
Seattle

Registered in
Scotland No. 186755



1.0 INTRODUCTION

- 1.1 Sports Labs were requested by Shaw Sports Turf to carry out performance testing on the synthetic pitch at Lyman Hall High School. Testing was carried out in accordance with the declared contract specification.
- 1.2 Testing was carried out on 9th December 2015 in overcast and dry conditions.
- 1.3 The pitch is constructed on a Dynamic base. The synthetic layers comprise of: Long pile, polyethylene fibre carpet, infilled with rubber and sand.

Substrate Type:	Dynamic		Infill Type:	Sand and SBR
Carpet Name:	Shaw		Shockpad:	None
Air Temperature during testing (°C):	AM	PM	Weather Conditions:	Overcast, Dry
	5.5	5.5		
Surface Temperature during testing (°C):	AM	PM	Wind Speed during testing (m/s):	1.3
	4.0	4.0		
Humidity (%):	AM	PM	Operator:	KO/MK
	78	78		

PREPARED BY Kieran O'Donnell
Field Operations Manager

CHECKED BY Richard Nixon
Director



2.0 TEST PROGRAMME

2.1 Testing was carried out at 19 and 6 locations across the pitch.

2.2 The suite of testing was carried out in accordance with the declared contract specification as follows:

2.2.1 Ball Rebound – EN 12235:2013

2.2.2 Ball Roll – EN 12234:2013

2.2.3 AAA

2.2.4 Rotational Resistance – EN 15301-1:2007

2.2.5 *Surface Regularity and Dimensions – EN 13036-7:2003

*Not all tests carried out are within our scope of ISO 17025 Accreditation.



3.0 TEST RESULTS

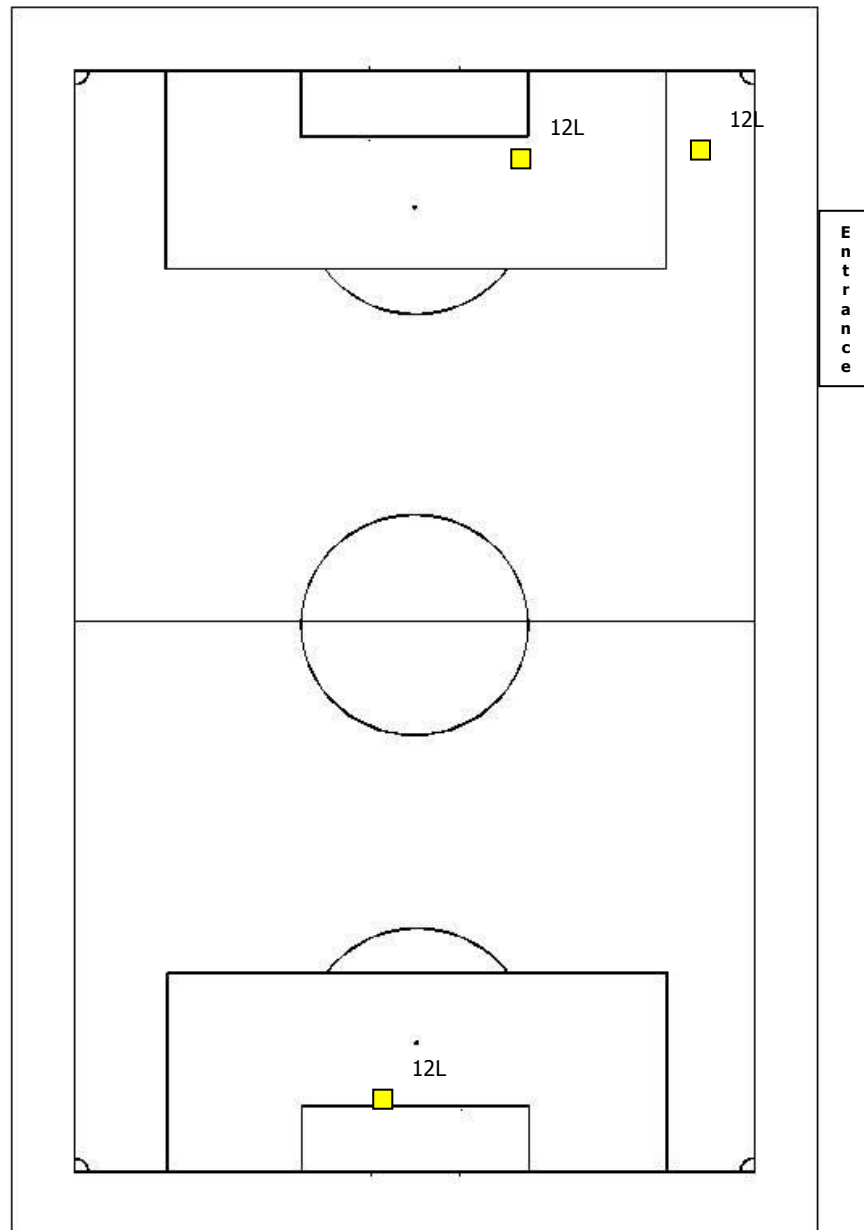
AAA Property	Test Position																		
	A	B	C	D	E	F	G	H	I	J	K	L	M	N	O	P	Q	R	S
Shock Absorption (%)	67	69	70	70	69	70	70	70	70	70	70	68	70	70	70	70	70	69	70
Vertical Deformation (mm)	10.7	11.0	10.7	11.0	10.9	10.9	10.9	11.0	11.0	11.0	10.3	10.1	10.3	10.9	11.0	10.7	10.9	11.0	10.9

Property	Test Position					
	1	2	3	4	5	6
Vertical ball Rebound (m)	0.67	0.67	0.76	0.75	0.75	0.61
Ball Roll (m)	9.0	9.1	8.8	9.0	8.0	8.6
Rotational Resistance (Nm)	38	39	43	40	39	39
No. of deviations in surface.	3					
Values in RED denote failure of client's specified limits						



3.1 SURFACE REGULARITY AND DIMENSIONS

Plan showing surface irregularities exceeding maximum requirement of 10mm under a 3m straight edge.



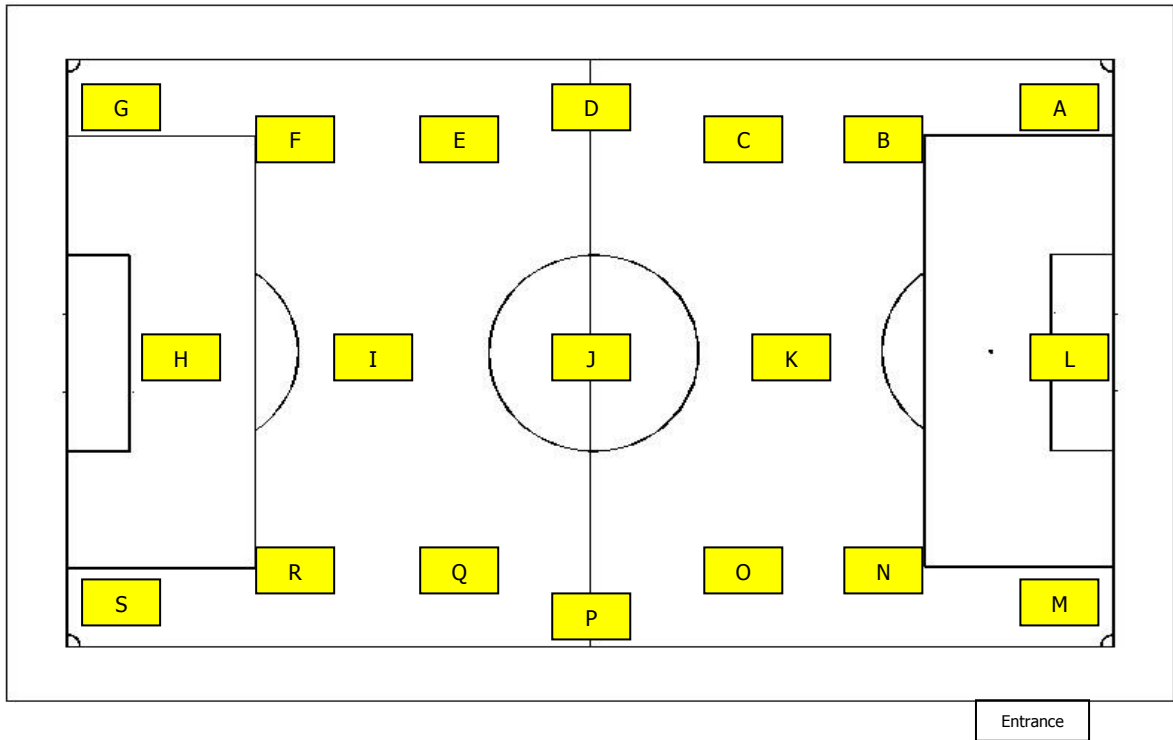


APPENDIX A

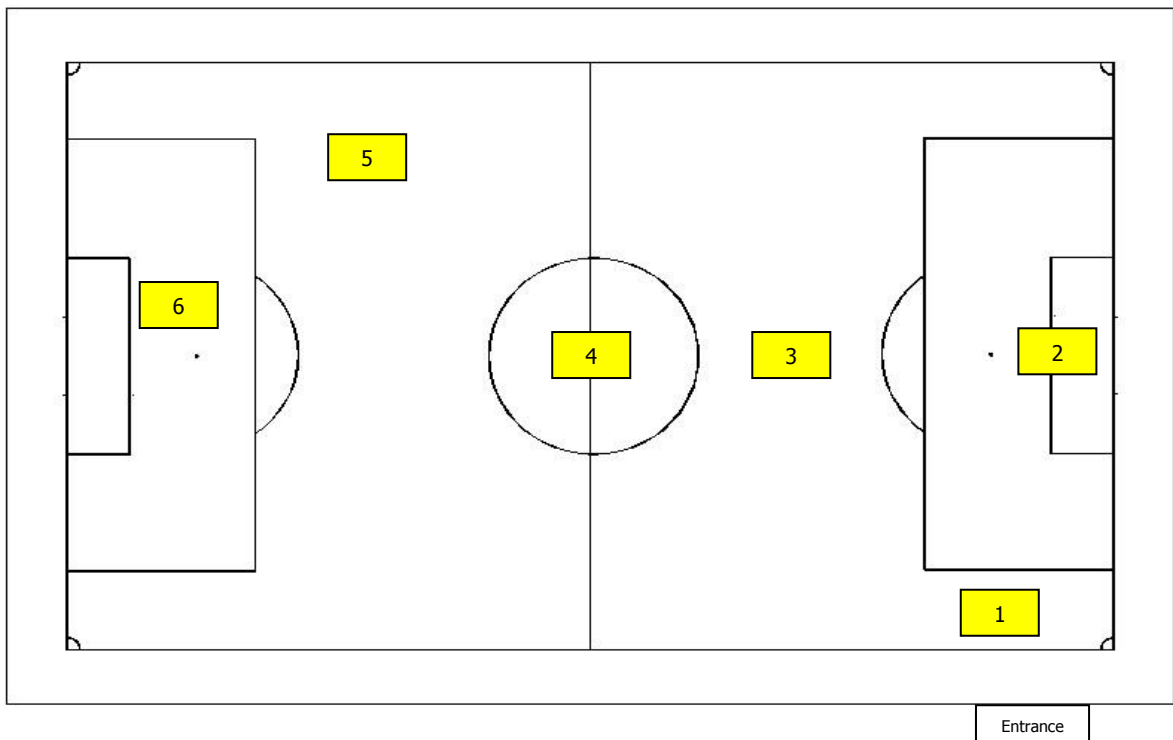
TEST LOCATION PLANS



AAA – TEST LOCATIONS



SIX POINT TEST LOCATIONS





APPENDIX B

SITE PHOTOGRAPHS



SITE OVERVIEW



HALFWAY 1



HALFWAY 2



END 1



END 2



DEFECTS



DEVIATIONS

DEVIATIONS



DEVIATIONS

DEVIATIONS

End of Report