

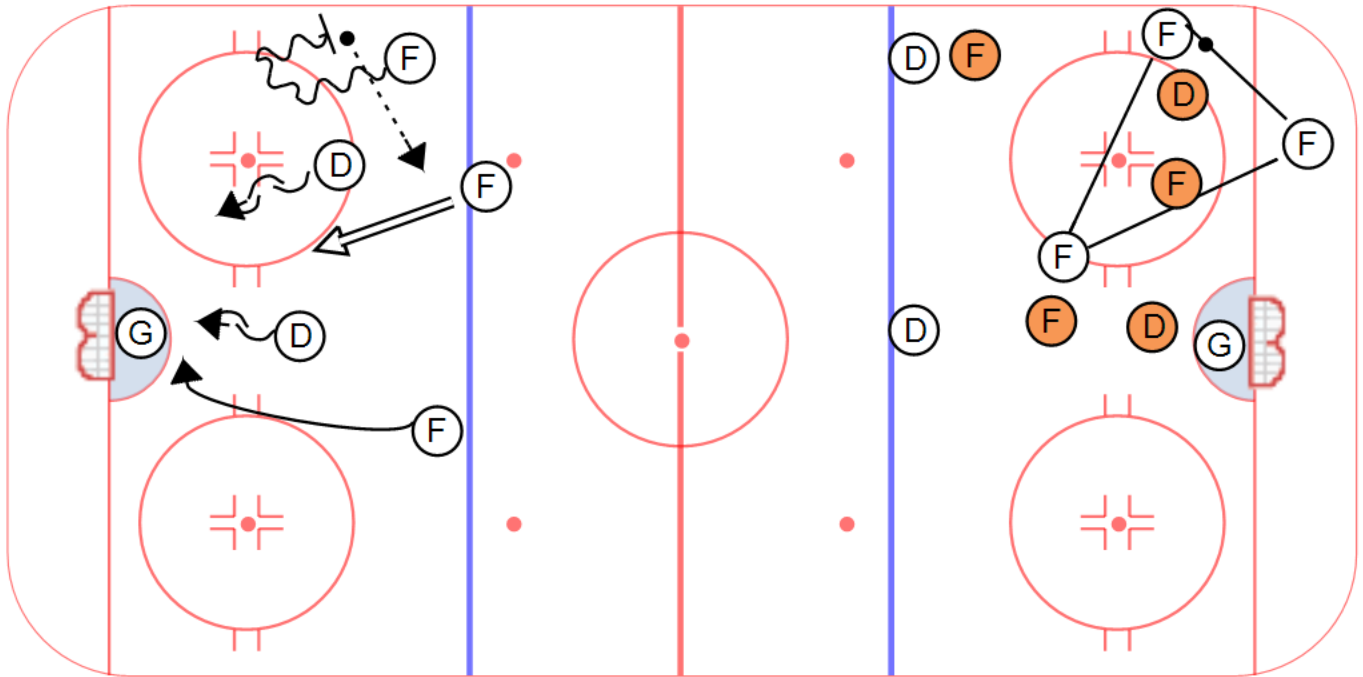
Category #1 : COACHES MANUAL

Category #2 : ATTACK OPTIONS

Title : OFFENSIVE DELAY AND ATTACK TRIANGLE

Content elements :

Components:



Key points :

SKATE WIDE WITH SPEED

COMMUNICATION

HEADS UP

HARD PASSES

Description

DELAY:

- Works best in a odd man situation, particularly a 3 on 2. The puck carrier skates the puck wide with speed drawing the defenseman to him creating an odd man situation in the middle of the ice. He drops the puck to the trailer who is in support for a pass creating a lane to the net forcing the remaining defenseman to let him shoot or pressure for a pass to the third forward who is crashing the net hard.

ATTACK TRIANGLE:

- Very important that once you have entered the zone you create whats called an attack triangle, having one forward in the high slot and two battling down low allowing options for the puck carrier. This is good for defensive support as well as the high guy allows defenseman to pinch without the concern of an odd man situation.